



TEXAS EQUIPMENT

Mobile Scissor Lift INSTALLATION GUIDE

United States

17779 Main Street Suite C
Irvine, CA 92614 USA
Tel: +1(949) 333-3800
Fax: +1(949) 333-3804

United Arab Emirates

P.O. Box 121971 Saif Zone A2-032
Sharjah, UAE
Tel: +971 (06) 552 98 60
Fax: +971 (06) 552 98 61

Egypt

9A Al-Mothalath
End of Mostafa El-Nahas Street
Nasr City, Cairo 11528 Egypt
Tel: +2019 550 0001
Fax: +2022 472 4346



Model 35006

SUMMARIZE OF CONFIGURATION, PURPOSE & PECULIARITY

TYJ3/GTYJ3 table mechanical elevating is a kind of hydraulic pressure workstation of oil supply, double hydraulic cylinders of table mechanical elevating.

TYJ3/GTYJ3 table mechanical elevating suitable for various kinds of medium and small-scale automobiles' maintaining, service and debugs etc. lifting and rising to work with installation. This lift has low positions of balcony, lifting and lowering with steadily, easy to operate; structure reasonable is it lock organization, remarkable characteristic such as being safe and reliable safely to having.



PRODUCT SPECIFICATIONS

Item	Description	
Weight Lifting Capacity	6000Pounds (2722kg)	
Lift Height	180mm-960mm	
Rating Pressure	Less Than 20Mpa	
Pump Type	Hydraulic /Electro w /Steel Dolly	
Pump Hydraulic Oil Capacity	2Gallon	
Hydraulic Pressure Oil	Wearable Of Hydraulic Pressure Oil [Viscosity 32-46cst (mm ² /s) At 40°C]	
Working Condition Temperature	5-40°C	
Working Condition Humidity	30%-80%RH	
Working Height Above Sea Level	MAX1000m	
Transport Environment For Store Of Temperature	-25-55°C	
Electrical Requirements	1HP	
	Single Phase	
	208-230V	
	50Hz	
	3-Prong Power Plug	
External Dimension	L(mm)	W(mm)
	2350--2600	1003--1420

The required electrical Power Cord Plug for this product is a grounded, 220 volt, 3-prong plug (not included).it is recommended that only a qualified electrician connect a Power Cord Plug with cord to the motor. Never remove the grounding prong or modify the plug in any way. Do not use adapter plugs with this product .When in use, make sure this product is always plugged into a grounded, 220 volt, 3-hole electrical receptacle with **an appropriate breaker switch** in-line.

SAVE THIS MANUAL

You will need this manual for the safety warning and precautions, assembly, operating, inspection, maintenance and cleaning procedures, parts list and assembly diagram. Keep your invoice with this manual. Write the invoice number on the inside of the front cover. Keep this manual and invoice in a safe and dry place for future reference.

GENERAL SAFETY WARNINGS AND PRECAUTIONS

WARNING!

READ AND UNDERSTAND ALL INSTRUCTIONS BEFORE OPERATING

Failure to follow all instructions listed in the following pages may result in electric shock, fire, and / or serious injury.

SAVE THESE INSTRUCTIONS

- 1. Keep work area clean and well lit.** Cluttered, wet and dark work areas invite accidents.
- 2. Do not operate power equipment in explosive atmospheres, such as in the presence of flammable liquids, gases, or dust.** Power equipment can create sparks which may ignite flammables.
- 3. Keep bystanders, children, and visitors away while operating power equipment.** Distractions can cause you to lose control.
- 4. Stay alert. watch what you are doing ,and use common sense when operating power equipment .do not use power equipment while tired or under the influence of drugs, alcohol, or medication.** A moment of inattention while operation power equipment may result in serious personal injury.
- 5. RISK OF ENTANGLEMENT!** Dress properly. Do not wear loose clothing or jewelry. Contain long hair. Keep your hair, clothing, and gloves away from moving parts. Loose clothes, jewelry, or long hair can be caught in moving parts.
- 6. Avoid accidental starting. Be sure the POWER SWITCH is off before plugging in.**
- 7. Remove adjusting keys or wrenches before turning on power equipment.** A wrench or a key that is left attached to a moving part of power equipment in unexpected situations.

8. Do not overreach. Keep proper footing and balance at all times. Proper footing and balance enables better control of the power equipment in unexpected situations.

9. Use safety equipment. Always wear approved safety impact eye goggles underneath a full face shield.

10. Only trained and authorized personnel should do positioning of vehicle and operation of the power equipment.

11. Use clamps (no included) or other practical ways to secure and support the work piece to a stable platform. Holding the work by hand or against you body is unstable and may lead to loss of control.

12. Do not use power equipment if the POWER SWITCH does not turn it on or off. Any equipment that cannot be controlled with the POWER SWITCH is dangerous and must be repaired or replaced.

13. Disconnect the Power Cord Plug from the power source before making any adjustments, changing accessories, or storing the power equipment. Such preventive safety measures reduce the risk of starting the equipment accidentally.

14. Maintain power equipment with care. Properly maintained equipment are less likely to fail and are easier to control, do not use damaged power equipment. Tag damaged power equipment “Do not use” until repaired.

15. Check for misalignment or binding of moving parts, breakage of parts, and any other condition that may affect the power equipment's operation. If damaged, have the equipment serviced before using. Many accidents are caused by poorly maintained power equipment.

16. Use only accessories that are recommended by the manufacturer for your model. Accessories that may be suitable for one power equipment may become hazardous when used on another power equipment.

17. Service must be performed only by qualified repair personnel. Service or maintenance performed by unqualified personnel could result in a risk of injury.

18. When servicing, use only identical replacement parts. Follow instructions in the “INSPECTION, MAINTENANCE, AND CLEANING” section of this manual. Use of unauthorized parts or failure to follow maintenance instructions may create a risk of electric shock or injury.

19. Grounded tools must be plugged into an outlet properly installed and grounded in accordance with all codes and ordinances. Never remove the grounding prong or modify the plug in any way. Do not use any adapter plugs. Check with a qualified electrician if you are in doubt as to whether the outlet is properly grounded. If the tools should electrically malfunction or break down, grounding provides a low resistance path to carry electricity away from the user.

20. Double insulated tools are equipped with a polarized plug (one blade is wider than the other). This plug will fit in a polarized outlet only one way. If the plug does not fit fully in the outlet, reverse the plug. If it still does not fit. Contact a qualified electrician to install a polarized outlet. Do not change the plug in any way. Double insulation eliminates the need for the three wire grounded Power Cord and grounded power supply system.

21. Avoid body contact with grounded surfaces such as pipes, radiator and ranges. There is an increased risk of electric shock if your body is grounded.

22. Do not expose power tools to rain or wet conditions. Water entering a power tool will increase the risk of electric shock

23. Do not abuse the Power Cord. Never use the Power Cord to carry the tools or pull the plug from an outlet .keep the Power Cord away from heat, oil, sharp edges, or moving parts. Replace damaged Power Cords immediately. Damaged Power Cords increase the risk of electric shock.

24. Improperly connecting the grounding wire can result in the risk of electric shock. Check with a qualified electrician if you are in doubt as to whether the outlet is properly grounded. Do not modify the power cord plug provided with the tool.

Never remove the grounding prong from the plug. Do not use the tool if the power cord or plug is damaged. If damaged, have it repaired by a service facility before use. If the plug will not fit the outlet, have a proper outlet installed by a qualified electrician.

25. IMPORTANT! If the Lift is to be powered by a 230 volt, grounded, electrical outlet, a 230 volt grounded Power Cord (not included) must be wired to the Motor. Also, a 230 volt, grounded, Power Cord Plug (not included) must be attached to the Power Cord. **This wiring procedure must only be done by a qualified, certified electrician.**

26. DANGER! Make sure you know the weight of the vehicle you are going to lift before using the Lift. Do not exceed the maximum lift capacity (**6000 pounds**) for the Lift. Overloading the Lift could cause personal injury and / or property damage. Be aware of dynamic loading! If a weight suddenly falls onto the Lift. It may create for a brief instant an excess load which may result in personal injury and / or damage to the vehicle and Lift.

27. Use the Lift only in well ventilated areas. Carbon monoxide exhausted from running vehicle engines is a colorless, odorless fume that, if inhaled, can cause serious personal injury.

28. Make sure to read and understand all instructions and safety precautions as outlined in the manufacturer's manual for the vehicle you are lifting. All four Rubber Saddles (39B) of the Lift must be used when lifting a vehicle. Always use the manufacturer's recommended lifting points.

29. DO not use the Lift on any asphalt surface. Make sure the Lift is used on a dry, oil/grease free, flat, level, **concrete** surface capable of supporting the weight of the

Lift. Do not use the Lift on concrete expansion seams or on cracked, defective concrete.

30. Always examine the Lift for structural cracks, bends, damage to the hydraulic hoses and electrical wiring, and any other condition that may affect the safe operation of the Lift. Do not use the Lift even if minor damage is detected.

31. IMPORTANT! Operation (raising or lowering) of the Lift can be immediately stopped at any time by releasing pressure on the POWER SWITCH located on the Motor.

32. Make sure the oil tank is completely filled (approx. 2 gal.) with a premium quality hydraulic oil prior to operation the Lift.

33. Always allow at least two seconds after the Motor starts to raise or lower the Lift. Failure to do so may cause the Motor to burn out.

34. Prior to beginning a job, make sure the Safety Lock Assembly (36B) and its Safety Catches are in the proper position. Never work underneath a vehicle without using additional safety support devices to support the vehicle.

35. Always keep hands, fingers, and feet away from the moving parts of the Lift when applying or releasing a load. Remain clear of the Lift when raising or lowering a vehicle.

36. Use extreme caution when applying or releasing a load. Never allow the load to suddenly release. Slowly and carefully apply and release the load.

37. Never leave the Lift unattended when the Lift is under a load.

38. Before driving a vehicle onto the Lift make sure the Lift is fully lowered. Before driving a vehicle onto the Lift, position the Plates (42B) and Rubber Saddles (39B) inward. Do not hit or run over the Plates and Rubber Saddles, as this could damage the vehicle. Make sure the Lift is fully lowered before driving the vehicle off.

39. Should any weight component be removed from, or added to the vehicle, use a jack stand (not included) to support the over balanced end during the maintenance procedure. Do not operate the Lift if the vehicle load tilts or binds during the up or down movement. Always position the vehicle with the center of gravity midway between the Rubber Saddles (39B).avoid excessive rocking of the vehicle while it is its raised position.

40. Never lift a vehicle with anyone inside it. Do not allow others in the lift area while operation the Lift. Do not allow anyone to ride on the Lift while it is being raised or lowered.

41. When lifting a vehicle raise the Rubber Saddles (39B) slowly until the rubber saddles securely contact the vehicle manufacturer's recommended lifting points. Then, lift the vehicle to the desired working height. Always lift the vehicle high enough for the Safety Lock Assembly (36B) to operate properly.

42. Do not use the Lift as a permanent stand for a vehicle. Use the Lift only while making repairs. Then, immediately remove the vehicle from the Lift.

43. Before lowering the Lift, make sure tool trays, stands, and all other tools and equipment are removed from under the vehicle.

44. Make sure to squeeze and hold in on the Brake Lever (13B) before attempting to lower the vehicle. Do not release on the Brake Lever until the Lift is completely.

45. Before removing a vehicle from the Lift make sure the Plates (42B) and Rubber Saddles (39B) are moved inward to provide an unobstructed exit.

46. In the general rated load state of the lift , noises should under 75dB

47. Forbid tearing up the warning or other labels of the lift

The warnings, precautions, and instructions discussed in this manual cannot cover all possible conditions and situations that may occur. The operator must understand that common sense and caution are factors which cannot be built into this product, but must be supplied by the operator.

ASSEMBLY INSTRUCTIONS

NOTE: For additional references to the parts listed in the following pages, refer to the Assembly Diagrams on pages 16, 17 and 18.

Determine The Proper Lift Location:

1. DO not use the Lift on any asphalt surface. Make sure the Lift used on a dry, oil/grease free, flat, level, **concrete** surface capable of supporting the weight of the Lift. Do not use the Lift on concrete expansion seams or on cracked, defective concrete.
2. Make sure to check the desired location for possible obstructions such as a low ceiling, overhead lines, adequate working area, access ways, exits, etcetera.
3. Make sure to allow a minimum space of 14 feet in front and behind the Lift to accommodate all vehicles. Certain allowances should be made for special vehicle requirements or unusual floor plans.

To Attach The Hydraulic Pump To The Lift:

1. Locate the Hydraulic Pump in an area where it will be out of the way, is safe from damage and weather, and where it can be easily reached to operate.
2. One end of the General Inlet Pipe (18B) has been pre-attached to the Lift by the manufacturer. To attach the remaining end of the General Inlet Pipe to the Hydraulic Pump wrap the male threads of the Oil Pipe Connector (17B) with about 4" of pipe thread seal tape (no included). Remove the Oil Filler Nut Cap

from the threaded Hydraulic Oil Delivery Port. Then, wrench tightens the Oil Pipe Connector into the Hydraulic Oil Delivery Port.

3. One end of the Brake Steel Cable (10B) has been pre-attached to the Lift by the manufacturer. The Brake Lever Assembly (13B) is located on the remaining end of the Brake Steel Cable, and must be attached to the Handle (1B) of the Dolly. To do so, slide the Brake Lever Assembly onto the Handle. Then, secure the Brake Lever Assembly by the Handle by tightening the Bolt (14B).

To Fill The Oil Tank with Hydraulic Oil:

The hydraulic Oil Tank has a holding capacity of 2 gal. To fill the Oil Tank, squeeze and hold the Brake Lever (13B) to release any load on the Lift. Remove the Oil Tank Fill Cap on the Oil Tank. Add a premium quality hydraulic oil until the level of the oil is even with the Oil Tank's fill hole. Then, replace the Oil Tank Fill Cap. Before the first use and before all subsequent uses, check the hydraulic oil tank to make sure the Oil Tank is properly filled.

OPERATING INSTRUCTIONS

Check The Safety Lock Assembly:

1. **WARNING!** Never operate the Lift if the Safety Lock Assembly is not working properly.
2. Plug the Power Cord of the Lift into a properly grounded, 3-hole, electrical receptacle and allow several seconds for the Motor to warm up.
3. Squeeze and release the Brake Level (13B) several times and, while doing so, observe that the Safety Lock Assembly operates properly in response to the Brake Lever. Then, release pressure on the Brake Lever.

4. Press on the POWER SWITCH and hold, and observe that the Safety Lock Assembly "clicks" into place as the Lift rises. **NOTE:** there are safety catches on the Safety Lock Assembly as the Lift rises. Once the Safety Lock Assembly locks into each of these safety catches, you must squeeze and hold in on the Brake Lever (13B) to lower the Lift.
5. Once the Lift is fully elevated, release pressure on the POWER SWITCH.
6. Without squeezing the Brake Lever (13B), press in on the Pressure Relief Valve Handle and hold. Observe that the Lift will not lower, as the Safety Lock

Assembly is engaged. **CAUTION. If the Safety Lock Assembly does not engage, fully lower the Lift and have a qualified service technician immediately repair the Safety Lock Assembly.**

7. Should the Safety Lock Assembly not operate as described in step #6, raise the Lift slightly to take pressure off the safety catches. Then, while squeezing the Brake Lever (13B) lower the Lift fully to the floor. **NOTE:** When working properly, you must BOTH squeeze in and hold the Brake Lever and press in and hold the Pressure Relief Valve Handle to lower the Lift.

To Position, Lift, And Lower A Vehicle On The Lift:

1. Before driving a vehicle onto the Lift make sure that the Lift is fully lowered, and position the Plates (42B) and Rubber Saddles (39B) inward.
2. Drive the vehicle over the Lift while keeping the vehicle parallel with the Lift and aligning the center of gravity of the vehicle with the center of the Lift. **NOTE:** the "Center Of Gravity" (COG) of the vehicle is the balance point at which there is equal weight in front of and behind the COG and equal weight on both sides of the COG. The COG is not necessarily the dimensional center of the vehicle, but is often slightly toward the engine from the dimensional center of the vehicle.

3. Turn off vehicle's engine and engage the parking brake of the vehicle.
4. Read the vehicle owner's manual to identify the recommended vehicle lifting points.
5. Move the Plates (42B) outward, and position the Rubber Saddles (39B) to contact the vehicle lifting points.
6. Do not lift the vehicle if you cannot establish secure and level lifting points. Do not use sub-standard shims or other devices in place of approved and recommended Rubber Saddles (39B) adapters. Never use the Lift without the Rubber Saddles in place on each Plate (42B) and in contact with the lifting points of the vehicle.
7. Once the Rubber Saddles (39B) have been positioned under the vehicle lifting points, operate the **POWER SWITCH** to lift the vehicle slightly, and test to make sure the vehicle is well balanced and the contact between the Rubber Saddles and vehicle lifting points are secure. Then, proceed to lift the vehicle to the desired height.
8. When the vehicle has been lifted to the desired height, and the Safety Lock Assembly has locked in place, make sure to install proper safety jack stands (not included), under the vehicle once it is lifted to the desired height, as an additional safety measure.
9. Once the repair work to the vehicle is completed make sure to remove all tools, safety jack stands, and materials from under the vehicle and Lift. Also, make sure the work area is clear and it is safe to lower the vehicle.
10. To lower the Lift, use the **POWER SWITCH** and raise the vehicle slightly to take weight off the Safety Lock Assembly. Then, release pressure on the **POWER SWITCH**.
11. Stand well away from the Lift and vehicle. Then squeeze and hold in the Brake Lever (13B) while at the same time pushing in and holding the Pressure Relief

Valve Handle to slowly lower the Lift all the way down to the floor.

12. Move the Rubber Saddles (39B) and Plates (42B) inward, out of the path of the vehicle.
13. Disengage the vehicle parking brake. Start the vehicle's engine, and drive the vehicle off the Lift slowly and carefully.

INSPECTION, MAINTENANCE, AND CLEANING

WARNING! Always unplug the Power Cord from its electrical outlet before performing any inspection, adjustments, maintenance, or cleaning.

1. **Before each use**, inspect the general condition of the Lift. Check for loose screws, misalignment or binding of moving parts, checked or broken parts, damaged electrical wiring and hoses, and any other condition that may affect its safe operation. If abnormal noise or vibration occurs, have the problem corrected before further use. **Do not use damaged equipment.**
2. **Daily:** With compressed air or a vacuum, remove all dirt and debris from the Lift. Also, use a detergent or mild solvent to remove oil and grease from the unit. Then, use a premium quality, machine oil to lubricate all moving parts.
3. **Daily:** Check the level of hydraulic oil in the Oil Tank has a holding capacity of 2 gal .to fill the Oil Tank, squeeze and hold the Brake Level to release any load on the Lift. Remove the Oil Tank Fill Cap on the Oil Tank. Add a premium quality hydraulic oil until the level of oil is even with the Oil Tank's fill hole. Then, replace the Oil Tank Fill Cap.
4. If does not use the Lift for a long time, should prevent dust, prevent rusty. If it should be transport or shift, the moveable part on the Lift, should all be regular, and it is good to use the soft packing article cushion.

TROUBLE SHOOTING GUIDE

PROBLEM	CAUSE	SOLUTION
Motor dose not run	Without electrical source	Replace the cable, the end of wire or fuse box
	The voltage is incorrect	Use the correct voltage
	The operate button damaged	Replace the operate button
	Motor windings burned out	Replace Motor
Motor runs but will not raise lift	Motor runs in reverse rotation	Change Motor rotation by reverse leads
	Unload valve open up or invalidation	Replace or repair unload valve
	Pump sucking air	Tighten all suction line valval
	Low oil level	Fill Tank
Motor runs and raise unloaded lift but will not rail vehicle	Motor running on low voltage	Supply correct voltage to Motor
	Overloading lift	Check vehicle weight on lift
	Unload valve invalidation	Replace unload valve
Cannot lowering	Unload valve operate Handle is damage	Replace unload valve operate Handle
	The hydraulic oil is too dirty and having eyewinker	Replace the hydraulic oil

PATRS LIST/ASSEMBLY DIAGRAM A

PART#	DESCRIPTION	QTY.	PART#	DESCRIPTION	QTY.
1A	Motor	1	9A	Safety Valve ASSY.	1
2A	Nut (M12x1.5)	1	10A	Valve Seat	1
3A	Pressure Relief Valve Handle	1	11A	Gear Pump	1
4A	Oil Fill Cap	1	12A	Bolt	2
5A	Release Valve Assy.	1	13A	Oil Tank	1
6A	Check Valve Assy.	1	14A	Bolt	4
7A	9 Gear Bearing Cap	1	15A	Bumper Assy.	1
8A	Safety Valve Cap	1			



WARNING

. Risk of Explosion. This equipment has internal arcing or sparking parts which should not be exposed to flammable vapor. This equipment should be located at least 460mm (18inches) above floor.

. Motor not protected-external overheat protection, must be provided.

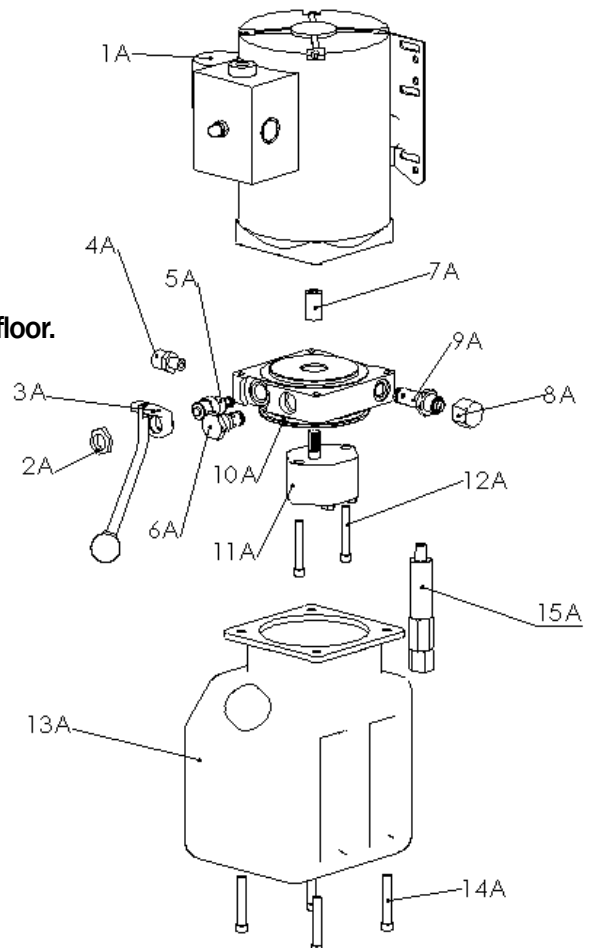
Motor warning!

Important:

Allow 2 seconds between motor starts.

Failure to comply may cause motor broke out .

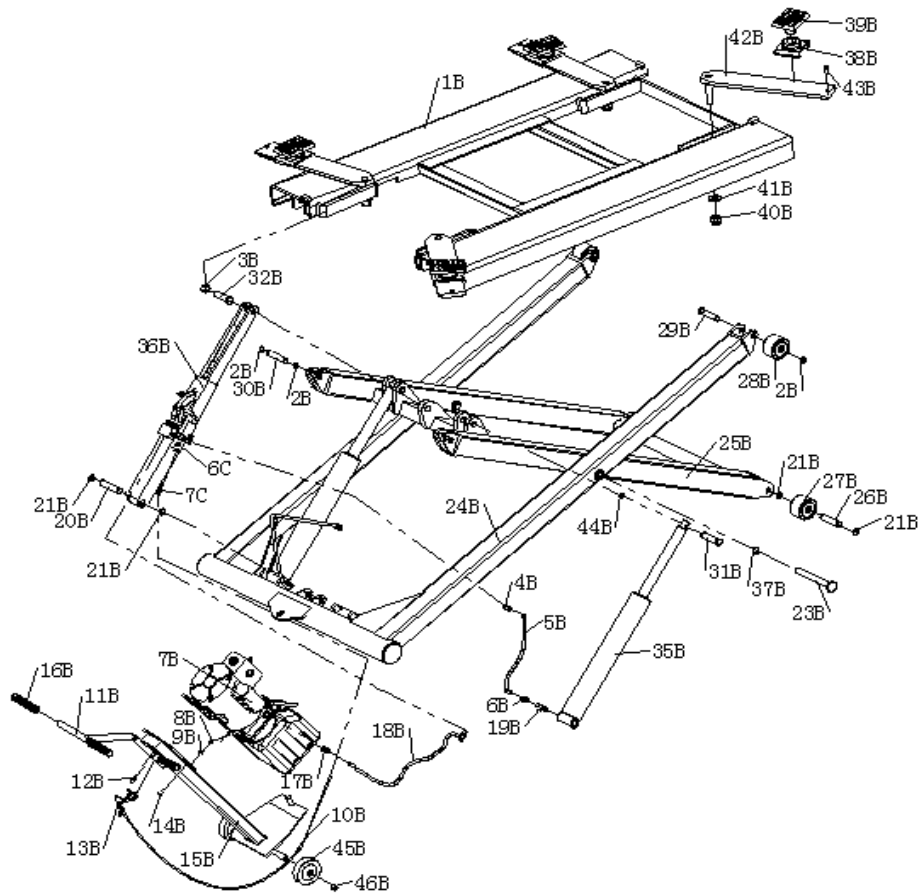
Please fill with high-quality hydraulic oil with viscosity 32-46cst (mm²/s) at 40°C according to regulation.



NOTE: Some parts are listed and shown for illustration purposes only, and are not available individually as replacement parts.

PATRS LIST/ASSEMBLY DIAGRAM B

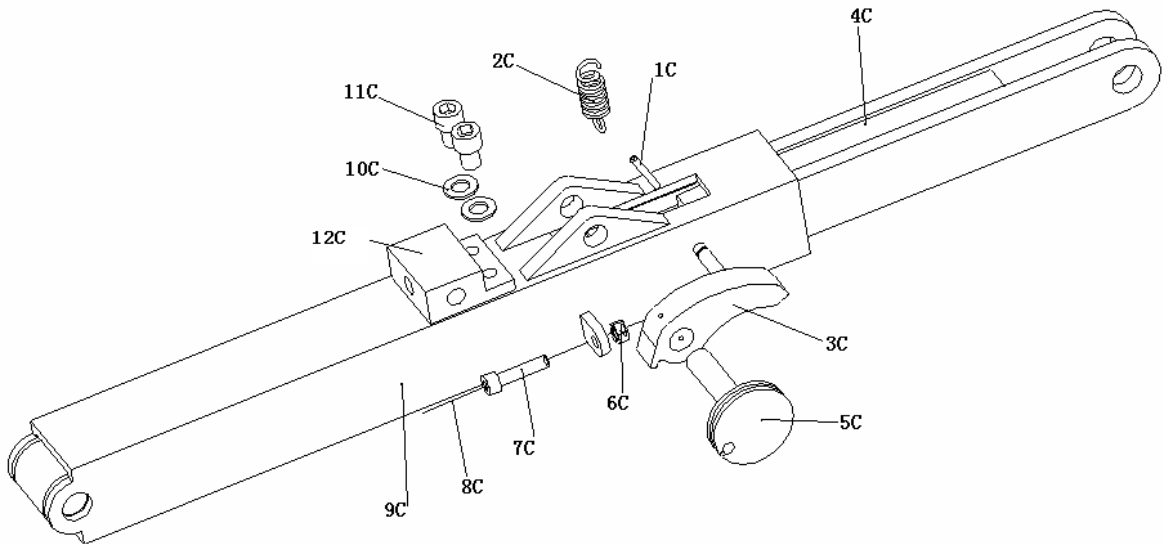
PART #	DESCRIPTION	QTY.	PART #	DESCRIPTION	QTY.
1B	Table	1	24B	Outer Scissor	1
2B	Retaining Ring(18)	6	25B	Inner Scissor	1
3B	Locking Nut (M20)	1	26B	Wheel Pin	2
4B	Oil Pipe Connector(3)	3	27B	Large Wheel	2
5B	Branch Inlet Pipe	2	28B	Small Wheel	2
6B	Oil Pipe Connector(2)	2	29B	Wheel Pin	2
7B	Oil Supply Fitting	1	30B	Connecting Pin	2
8B	Nut (M8)	4	31B	Cylinder Pin	2
9B	Washer (8)	4	32B	Safety Locking Pin	1
10B	Brake Steel Cable	1	35B	Cylinder Assy.	2
11B	Handle	1	36B	Safety Locking Assy.	1
12B	Hex Screw (M8)	4	37B	Retaining Ring(24)	2
13B	Brake lever Assy.	1	38B	Saddle Holder	4
14B	Bolt (M8)	4	39B	Rubber Saddle	4
15B	Transmission Holder	1	40B	Locking Nut	4
16B	Rubber Cap	3	41B	Washer (20)	4
17B	Oil Pipe Connector(1)	1	42B	Plate	4
18B	General Inlet pipe	1	43B	Bolt (M8x20)	4
19B	Check Valve	2	44B	Ring (15)	2
20B	Safety locking Pin	1	45B	Wheel	2
21B	Retaining Ring(20)	6	46B	Nut	2
23B	Scissor Pin	2			



NOTE: Some parts are listed and shown for illustration purposes only, and are not available individually as replacement parts.

PATRS LIST/ASSEMBLY DIAGRAM C

PART#	DESCRIPTION	QTY.	PART#	DESCRIPTION	QTY.
1C	Pin	1	7C	Bolt (M8)	1
2C	Spring	2	8C	Brake Wire Cable	1
3C	Lock Block	1	9C	Lock Sheath	1
4C	Lock Pole	3	10C	Washer (12)	1
5C	Lock Wheel	1	11C	Bolt (M12)	1
6C	Nut (M8)	1	12C	Check Valve	1



NOTE: Some parts are listed and shown for illustration purposes only, and are not available individually as replacement parts.