



TEXAS EQUIPMENT

2 Post Asymmetric Hydraulic Lift PARTS CATALOG

United States

17779 Main Street Suite C
Irvine, CA 92614 USA
Tel: +1(949) 333-3800
Fax: +1(949) 333-3804

United Arab Emirates

P.O. Box 121971 Saif Zone A2-032
Sharjah, UAE
Tel: +971 (06) 552 98 60
Fax: +971 (06) 552 98 61

Egypt

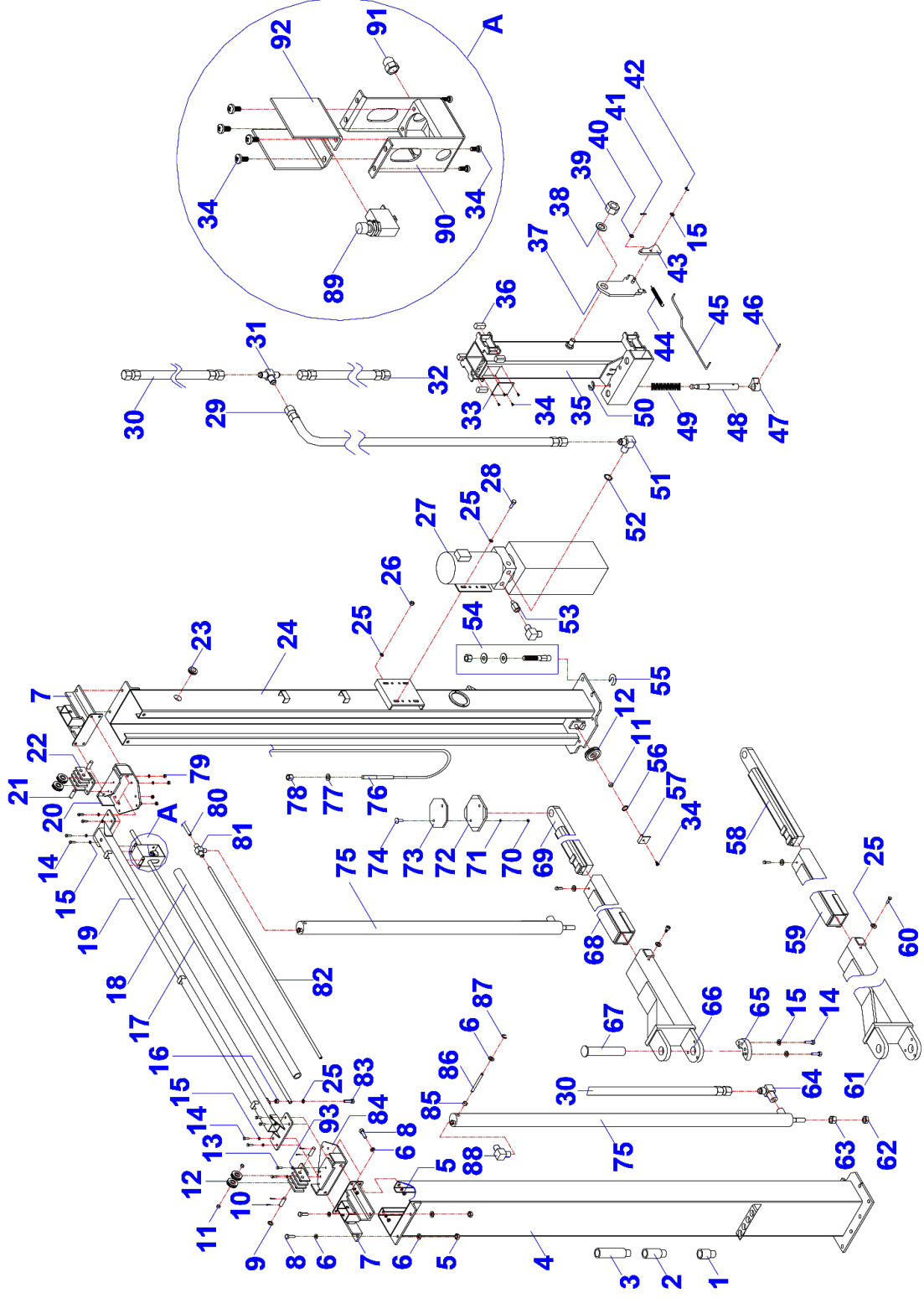
9A Al-Mothalath
End of Mostafa El-Nahas Street
Nasr City, Cairo 11528 Egypt
Tel: +2019 550 0001
Fax: +2022 472 4346



**Model
26810A**

Exploded Diagram

26810A



ITEM	CODE	DESCRIPTION	QTY
1	165948B*01-001	Adaptor 1#	4
2	165948B*01-002	Adaptor 2#	4
3	165948B*01-003	Adaptor 3#	4
4	165948B*01-004	Column A	1
5	165948B*01-005	Nut	12
6	165948B*01-006	Washer	28
7	165948B*01-007	Cylinder base	2
8	165948B*01-008	Bolt	12
9	165948B*01-009	Flat washer	8
10	165948B*01-010	Locking pin	8
11	165948B*01-011	Bearing	6
12	165948B*01-012	Dolly	6
13	165948B*01-013	Bolt	4
14	165948B*01-014	Bolt	16
15	165948B*01-015	Flat washer	26
16	165948B*01-016	Nut	1
17	165948B*01-017	Ceiling bar	1
18	165948B*01-018	Soft rubber	1
19	165948B*01-019	Crossbeam	1
20	165948B*01-020	Angle bracket 2#	1
21	165948B*01-021	Shaft	4
22	165948B*01-022	Dolly bracket	2
23	165948B*01-023	Protecting ring	1
24	165948B*01-024	Column B	1
25	165948B*01-025	Washer	17
26	165948B*01-026	Self lock nut	4
27	165948B*01-027	Motor pump	1
28	165948B*01-028	Bolt	4
29	165948B*01-029	Hose 3#	1
30	165948B*01-030	Hose1#	1
31	165948B*01-031	T-fitting	1
32	165948B*01-032	Hose 2#	1

ITEM	CODE	DESCRIPTION	QTY
33	165948B*01-033	Cover	2
34	165948B*01-034	Screw	18
35	165948B*01-035	Carriage	2
36	165948B*01-036	Nylon block	16
37	165948B*01-037	Latch board 1#	2
38	165948B*01-038	Washer	2
39	165948B*01-039	Self lock nut	2
40	165948B*01-040	Washer	2
41	165948B*01-041	Pin	2
42	165948B*01-042	Circlip	2
43	165948B*01-043	Latch board 2#	2
44	165948B*01-044	Spring	2
45	165948B*01-045	Pull hook	2
46	165948B*01-046	Cotton pin	4
47	165948B*01-047	Half gear small	4
48	165948B*01-048	Gear axle	4
49	165948B*01-049	Spring	4
50	165948B*01-050	Circlip	4
51	165948B*01-051	L-fitting	1
52	165948B*01-052	O-ring	1
53	165948B*01-053	Fitting	1
54	165948B*01-054	Anchor	12
55	165948B*01-055	Shim	16
56	165948B*01-056	Circlip	2
57	165948B*01-057	Cover	2
58	165948B*01-058	Arm extention 1#	2
59	165948B*01-059	Arm extention 2#	2
60	165948B*01-060	Bolt	8
61	165948B*01-061	Arm 3#	2
62	165948B*01-062	Nut	2
63	165948B*01-063	Nut	2

ITEM	CODE	DESCRIPTION	QTY
64	165948B*01-064	L-fitting	2
65	165948B*01-065	Half gear large	4
66	165948B*01-066	Arm 6#	2
67	165948B*01-067	Pin	4
68	165948B*01-068	Arm 5#	2
69	165948B*01-069	Arm 4#	2
70	165948B*01-070	Self lock nut	8
71	165948B*01-071	Washer	8
72	165948B*01-072	Pad	4
73	165948B*01-073	Rubber pad	4
74	165948B*01-074	Screw	8
75	165948B*01-075	Cylinder	2
76	165948B*01-076	Cable	2
77	165948B*01-077	Washer	4
78	165948B*01-078	Nut	8
79	165948B*01-079	Nut	8
80	165948B*01-080	Hose 2#	1
81	165948B*01-081	T-fitting	1
82	165948B*01-082	Hose 1#	1
83	165948B*01-083	Bolt	1
84	165948B*01-084	Angle bracket 1#	1
85	165948B*01-085	Sleeve	4
86	165948B*01-086	Shaft	2
87	165948B*01-087	Circlip	4
88	165948B*01-088	L-fitting	2
89	165948B*01-089	Micro switch	1
90	165948B*01-090	Case	1
91	165948B*01-091	Cable nut	1
92	165948B*01-092	Bracket	1
93	165948B*01-093	Washer	4